

Brass Gate Valves

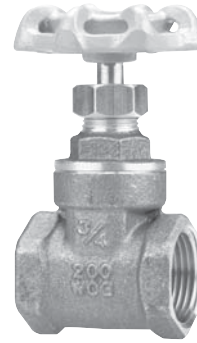
Brass Body • Non-Rising Stem • Reduced Port

200 PSI/14 Bar Non-Shock Cold Working Pressure
NSF/ANSI 61-8 Compliant

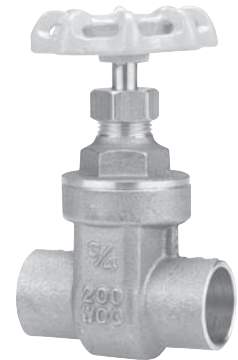
MATERIAL LIST

PART	SPECIFICATION
1. Nut	Steel Plated ASTM A 108 Alloy G10100
2. Name Plate	Aluminum ASTM B 209 Alloy 1100
3. Handwheel	Cast Iron ASTM A 48 Class No. 35
4. Stem	Brass ASTM B 16 Alloy C36000
5. Packing Nut	Brass ASTM B 16 Alloy C36000 or B 584 Alloy C85700
*6. Gland	Brass ASTM B 16 Alloy C36000
7. Packing	Graphite/Rubber - Non-Asbestos
8. Bonnet	Brass ASTM B 584 Alloy C85700
9. Lock Nut	Brass ASTM B 16 Alloy C36000
10. Wedge	Brass ASTM B 584 Alloy C85700
11. Body	Brass ASTM B 584 Alloy C85700

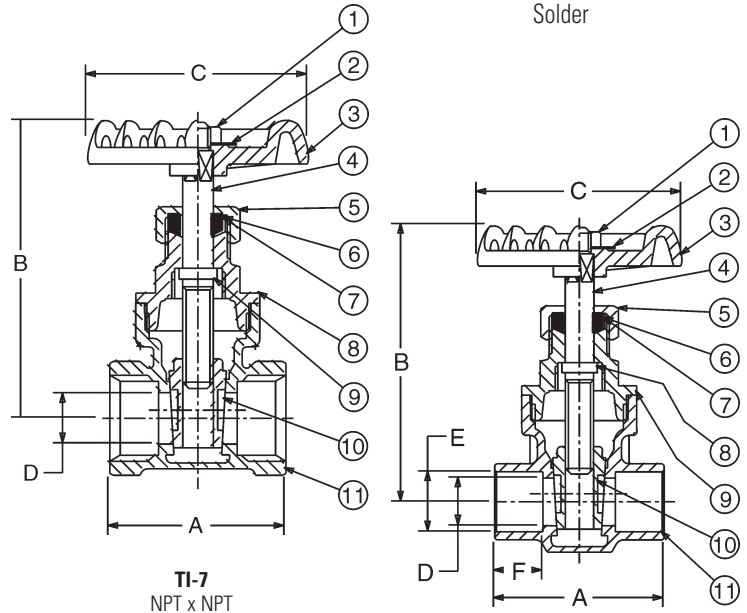
*Packing gland only for valves 1½" and larger.



TI-7
Threaded



SI-7
Solder



TI-7
NPT x NPT

SI-7
Cup x Cup

DIMENSIONS—WEIGHTS

Size	Dimensions																		WEIGHT						
	TI-7		SI-7		TI-7		SI-7		TI-7		SI-7		TI-7		SI-7		SI-7		TI-7		SI-7				
	A	A	B	B	C	C	D	D	E	F	A	A	B	B	C	C	D	D	E	F	Lbs.	Kg.	Lbs.	Kg.	
½	15	1.54	39	1.61	41	2.72	69	2.72	69	2.13	54	2.13	54	0.47	12	0.47	12	0.63	16	0.50	13	0.46	0.21	0.46	0.21
¾	20	1.71	44	2.11	54	2.83	72	2.83	72	2.13	54	2.13	54	0.57	14	0.57	15	0.88	22	0.75	19	0.59	0.27	0.59	0.27
1	25	1.85	47	2.48	63	3.31	84	3.31	84	2.13	54	2.13	54	0.75	19	0.75	19	1.13	29	0.91	23	0.83	0.38	0.83	0.38
1¼	32	2.09	53	2.64	67	3.86	98	3.86	98	2.40	61	2.40	61	0.94	24	0.94	24	1.38	35	0.97	25	1.18	0.54	1.18	0.54
1½	40	2.24	57	2.95	75	4.57	116	4.57	116	3.03	77	3.03	77	1.25	32	1.25	32	1.63	41	1.09	28	1.65	0.75	1.65	0.75
2	50	2.40	61	3.50	89	4.92	125	4.92	125	3.03	77	3.03	77	1.48	38	1.48	38	2.13	54	1.34	34	2.62	1.19	2.62	1.19
2½	65	2.80	71	3.90	99	6.02	153	6.02	153	3.27	83	3.27	83	1.94	49	1.94	49	2.63	67	1.47	37	3.86	1.75	3.86	1.75
3	80	3.43	87	4.61	117	7.32	186	7.32	186	4.13	105	4.13	105	2.48	63	2.48	63	3.13	80	1.66	42	5.88	2.67	5.88	2.67
4	100	3.96	101	—	—	8.74	222	—	—	5.12	130	—	—	2.95	75	—	—	—	—	—	—	8.82	4.01	—	—