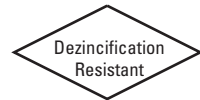


Bronze Ball Valves

Three-Piece Body • Full Port 1/4"-1" • Conventional Port 1 1/4"-3" •
316SS Trim • Blowout-Proof Stem • Vented Ball



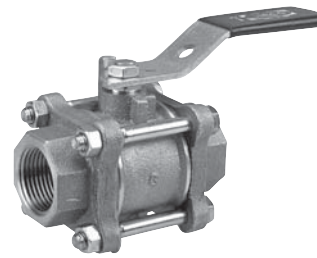
600 PSI/41.4 Bar Non-Shock Cold Working Pressure
150 PSI/10.3 Bar Saturated Steam

CONFORMS TO MSS SP-110

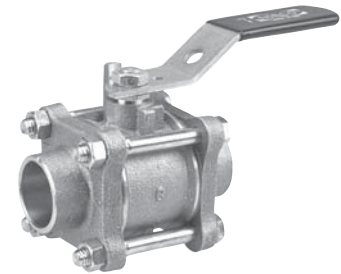
MATERIAL LIST

PART	SPECIFICATION
1. Handle Nut	Stainless Steel 300 Series
2. Handle	Zinc Plated Steel Clear Chromate Plastisol Coated
3. Threaded Pack Gland	Brass ASTM B 16 Alloy C36000
4. Stem	Stainless Steel ASTM A 276 Type 316
5. Body	Bronze ASTM B 584 Alloy C84400
6. Packing	PTFE
7. Body End (2)	Bronze ASTM B 584 Alloy C84400
8. O-Ring Seal (2)	Fluorocarbon Rubber
9. Seat Ring (2)	PTFE
10. Ball (Vented)	Stainless Steel ASTM A 276 Type 316 or ASTM A 351 Type CF8M
11. Thrust Washer	Reinforced PTFE
12. Body Bolts	Zinc Dichromate Plated Steel ASTM A 449 Grade 5
13. Body Nuts	Zinc Dichromate Plated Steel ASTM A 449 Grade 5

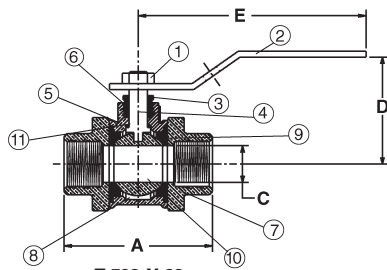
Note: Valves are static grounded by a grounding washer. (Not Shown)



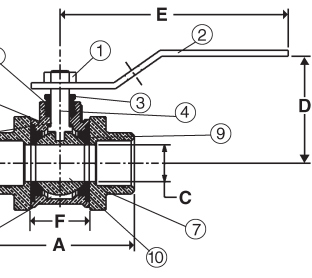
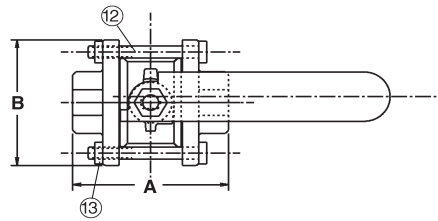
T-590-Y-66
Threaded



S-590-Y-66
Solder



T-590-Y-66
NPT x NPT



S-590-Y-66
C x C

DIMENSIONS—WEIGHTS—QUANTITIES

Dimensions

Size	T-590-Y-66		S-590-Y-66		S-590-Y-66		T-590-Y-66		S-590-Y-66		Master		
	A	A	B	C	D	E	F	Lbs.	Kg.	Lbs.	Kg.	Ctn.	Qty.
In. mm.	In. mm.	In. mm.	In. mm.	In. mm.	In. mm.	In. mm.	In. mm.	Lbs.	Kg.	Lbs.	Kg.	Ctn.	Qty.
1/4	8 2.50	64 1.69	43 1.81	46 .38	10 1.69	43 3.91	99 1.13	29 1.03	.47	.89	.40	50	
3/8	10 2.50	64 1.81	46 1.81	46 .38	10 1.69	43 3.91	99 1.13	29 .98	.44	.89	.40	50	
1/2	15 2.50	64 2.06	52 1.81	46 .50	13 1.69	43 3.91	99 1.13	29 1.03	.47	.89	.40	50	
3/4	20 3.00	76 2.94	75 1.94	49 .75	19 2.00	51 4.66	118 1.44	37 1.70	.77	1.59	.72	30	
1	25 3.69	94 3.66	93 2.50	64 1.00	25 2.25	57 4.66	118 1.84	47 2.82	1.28	2.55	1.15	20	
1 1/4	32 3.69	94 3.84	98 2.50	64 1.00	25 2.25	57 4.66	118 1.88	48 2.65	1.20	2.38	1.08	20	
1 1/2	40 4.09	104 4.25	108 2.69	68 1.25	32 2.75	70 6.69	170 2.03	52 3.77	1.71	3.42	1.55	10	
2	50 4.81	122 5.25	133 3.00	76 1.50	38 2.97	75 6.69	170 2.56	65 5.78	2.62	5.31	2.41	10	
2 1/2	65 6.16	157 6.12	155 4.00	102 2.00	51 3.63	92 6.69	170 3.19	81 10.75	4.88	9.92	4.50	4	
3	80 6.84	174 7.44	189 5.00	127 2.50	64 4.09	104 8.00	203 4.13	105 19.14	8.68	17.93	8.13	2	

†NIBCO supplies full port T or S-590-Y-66 on this size.

◆ For detailed Operating Pressure, refer to Pressure Temperature Chart on page 41.