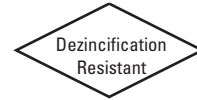


# Class 200 Bronze Check Valves

Horizontal Swing • Regrinding Type • Renewable Seat and Disc • Y-Pattern

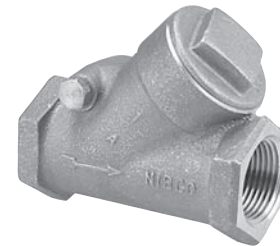
**200 PSI/13.8 Bar Saturated Steam to 391° F/201° C**  
**400 PSI/27.6 Bar Non-Shock Cold Working Pressure**



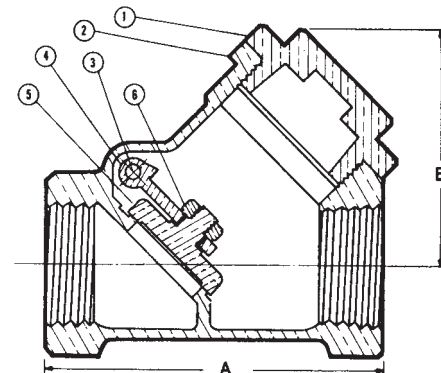
CONFORMS TO MSS SP-80

## MATERIAL LIST

PART	SPECIFICATION
1. Bonnet	Bronze ASTM B 61
2. Body	Bronze ASTM B 61
3. Hinge Pin	Bronze ASTM B 140 Alloy C31400 or B 134 Alloy C23000
4. Disc Hanger	Bronze ASTM B 61 or 304 Stainless Steel 1/4" thru 3/4" sizes
5. Seat Disc	Bronze ASTM B 61 C92200
6. Hanger Nut	Bronze ASTM B 16 C31400
7. Hinge Pin Plug	ASTM B 140 Alloy C31600 (not shown)



**T-453-B**  
Threaded



**T-453-B**  
NPT x NPT

## DIMENSIONS—WEIGHTS—QUANTITIES

Size	Dimensions				Weight		Master Ctn.	Qty.
	A		B		Lbs.	Kg.		
1/4	8	2.25	57	1.56	40	0.53	0.24	50
3/8	10	2.25	57	1.56	40	0.54	0.24	50
1/2	15	2.63	67	1.75	44	0.60	0.27	50
3/4	20	3.13	79	2.06	52	0.99	0.45	25
1	25	3.75	95	2.44	62	1.56	0.71	30
1 1/4	32	4.38	111	3.13	79	2.33	1.06	10
1 1/2	40	4.94	125	3.75	95	3.11	1.41	10
2	50	5.81	148	4.50	114	5.33	2.42	5
2 1/2	65	8.00	203	5.31	135	13.72	6.22	5
3	80	9.25	235	6.25	159	17.64	8.00	4

NIBCO check valves may be installed in both horizontal and vertical lines with upward flow or in any intermediate position. They will operate satisfactorily in a declining plane (no more than 15°).

**Warning – Do Not Use For Reciprocating Air Compressor Service.**

◆ For detailed Operating Pressure, refer to Pressure Temperature Chart on page 111.