

400 PSI WWP Bronze Side Outlet Globe Valves

Fire Protection Valve • 3-Way Valve • Screw-in Bonnet • Integral Seat • Renewable Disc



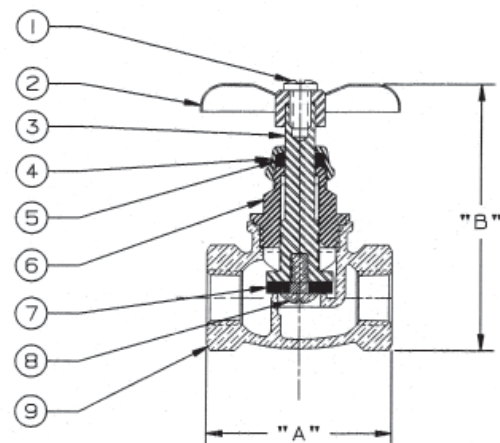
400 PSI/27.6 Bar Non-Shock Cold Water



KT-291-W3
Threaded

MATERIAL LIST

PART	SPECIFICATION
1. Handwheel Screw	Zinc Plated Steel
2. Handwheel	Aluminum ASTM B 85 Alloy C38000
3. Stem	ASTM B 133 Alloy C10200
4. Packing Nut	ASTM B 16 Alloy C36000
5. Packing	Non Asbestos Aramid Fibers w/Graphite
6. Bonnet	Bronze ASTM B 584 Alloy C84400
7. Disc	Nitrile
8. Disc Screw	Stainless Steel ASTM A 276 Alloy S43000
9. Body	Bronze ASTM B 584 Alloy C84400



KT-291-W3
NPT x NPT x NPT

DIMENSIONS—WEIGHTS—QUANTITIES

Size	Dimensions						Weight		Box Qty.	Master Ctn. Qty.	
	A		B		C		Lbs.	Kg.			
In.	mm.	In.	mm.	In.	mm.	In.	mm.				
1/4	8	1.75	44	2.25	57	.94	24	.41	.19	10	100

