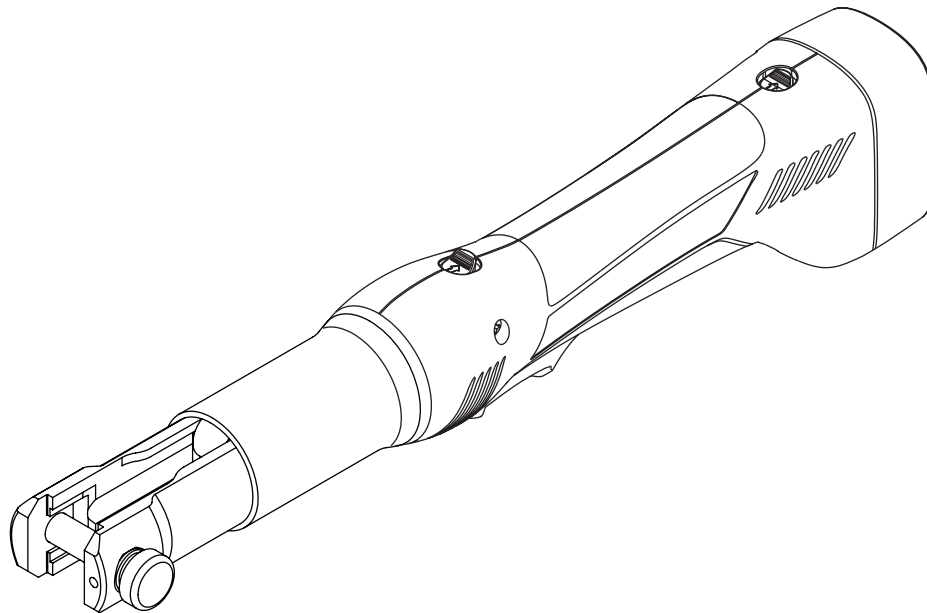


INSTRUCTION MANUAL

NIBCO[®]
AHEAD OF THE FLOW[®]

NIBCO Inc. – World Headquarters
1516 Middlebury Street
Elkhart, IN 46516
USA

Technical Services
Phone: 1-888-446-4226
Fax: 1-888-336-4226



PC-10M **Battery-powered** **Pressing Tool**



Read and understand all of the instructions and safety information in this manual before operating or servicing this tool.

Table of Contents

Description	2
Safety	2
Purpose of this Manual	2
Warranty	2
Important Safety Information	3-4
Identification	5
Specifications	5
Operation.....	6-8
Maintenance.....	8
Troubleshooting.....	9

Purpose of this Manual

This manual is intended to familiarize all users with the safe operation and maintenance procedures for the tool:

PC-10M	Battery-powered Pressing Tool with 120-volt Charger and (2) batteries
PC-100M	Battery-powered Pressing Tool with 120-volt Charger, (2) batteries and 1/2", 3/4" and 1" Pressing Jaws

Keep this manual available to all users.

For additional copies of the manual, visit the NIBCO website: www.nibco.com

Warranty

For warranty information on the NIBCO pressing tools, contact NIBCO technical services at 1-888-446-4226, or visit the NIBCO website: www.nibco.com.

Description

The PC-10M Battery-powered Pressing Tool is a hand-held, self-contained tool intended to press 1/2" through 1" copper NIBCO press fittings and valves onto type K, L, and M hard-drawn copper tubing.

Safety

Safety is essential in the use and maintenance of NIBCO tools and equipment. This manual and any markings on the tool provide information for avoiding hazards and unsafe practices related to the use of this tool. Observe all of the safety information provided.



Do not discard this product or throw away!

For recycling information, go to www.nibco.com.

All specifications are nominal and may change as design improvements occur. NIBCO, Inc. shall not be liable for damages resulting from misapplication or misuse of its product.

Tellus is a registered trademark of Shell Oil Company.

KEEP THIS MANUAL

Operation

⚠ WARNING

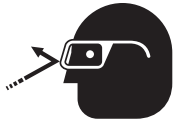
Inspect tool before use. Replace any worn or damaged parts. A damaged or improperly assembled tool can break and strike bystanders. Failure to observe this warning could result in severe injury or death.

⚠ WARNING



Electric shock hazard:
This tool is not insulated. When using this unit on or near energized electrical lines, use proper personal protective equipment. Failure to observe this warning could result in severe injury or death.

⚠ WARNING



Wear eye protection when operating or servicing this tool. Failure to wear eye protection could result in serious eye injury from flying debris or hydraulic oil.

⚠ WARNING



Pinch points:
Keep hands away from the pressing tool head when pressing. Failure to observe this warning could result in severe injury or death.

⚠ CAUTION

An incomplete press can cause leaks.

- Use proper fitting and copper tubing combinations. Improper combinations can result in an incomplete press.
- The relief valve will sound and the drive rollers automatically retracts when a complete press has been achieved. If you do not hear a “pop” and the drive rollers do not automatically retract, the press is not complete.

Failure to observe these precautions may result in injury or property damage.

⚠ CAUTION

- Do not use this tool for continuous use. After 30 to 40 cycles, allow the tool to cool for 15 minutes.
 - Do not secure this tool in a vise. This tool is designed for hand-held operation.
 - This tool may be used in damp or wet environments; however, air-drying is recommended before use if the tool becomes soaked. Damage may result when the tool is operated prior to thorough drying when electrical components are soaked.
 - Use this tool for the manufacturer’s intended purpose only.
- Failure to observe these precautions may result in injury or property damage.

Charging the Battery

Read the instructions supplied with the battery charger.


Important Features of the Unit

- The hydraulic unit incorporates an automatic retraction which returns the drive rollers into its starting position when the maximum operating pressure is reached.
- The unit is equipped with a special brake which stops the forward motion of the drive rollers when the trigger is released.
- The pressing head can be smoothly turned by 350° around the longitudinal axis in order to gain better access to tight corners and other difficult working areas.

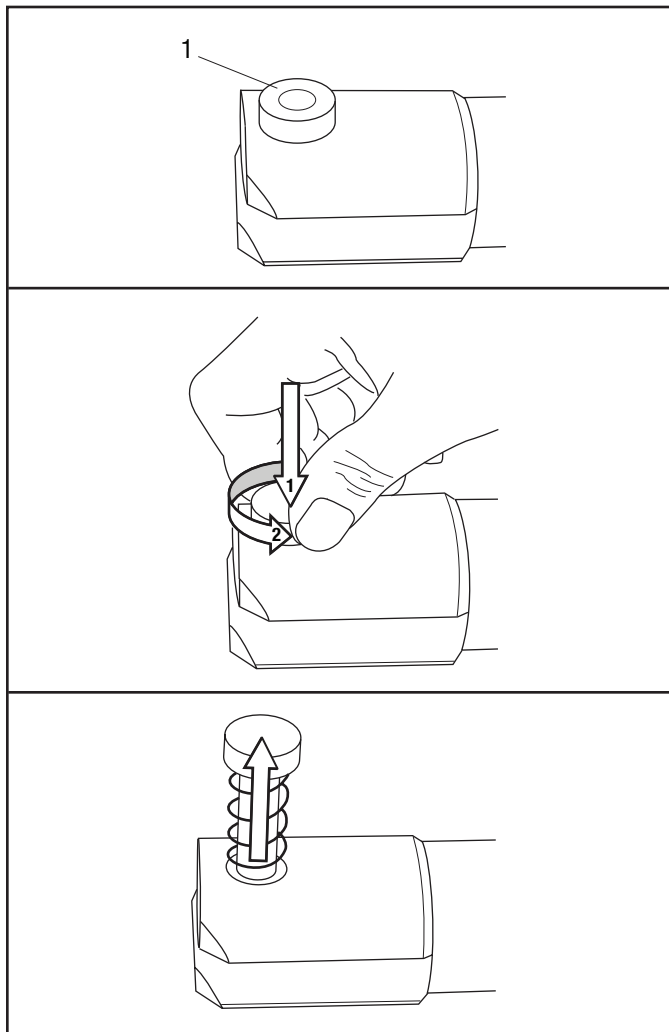
Operation (cont'd)

For 1/2", 3/4" and 1" copper tubing sizes:

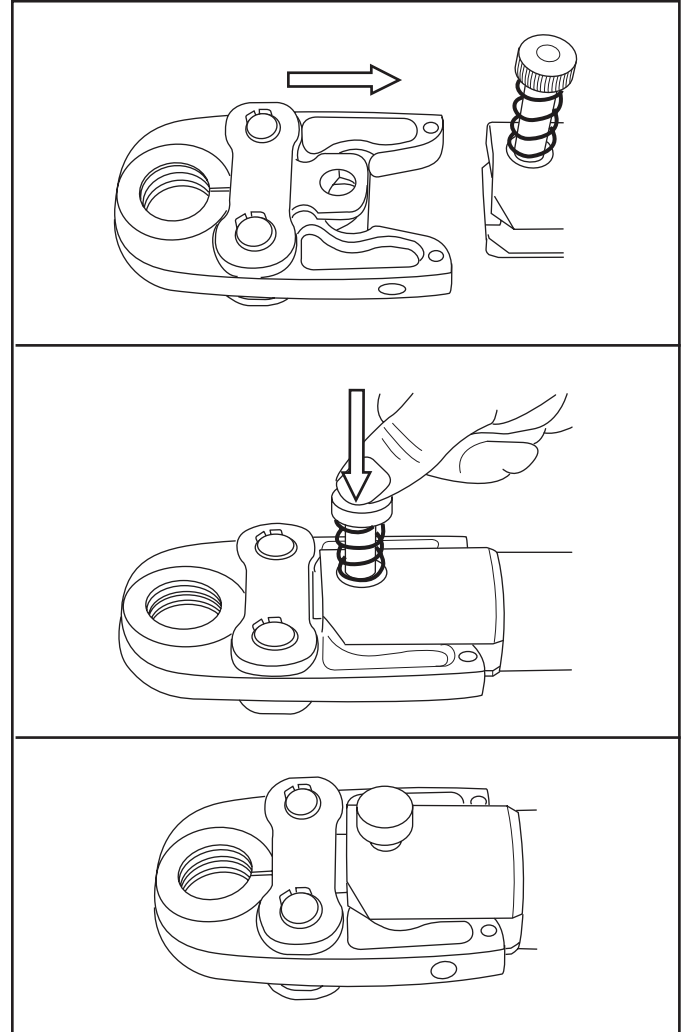
1. Select the proper pressing jaw for the intended application. Examine the jaw for wear, damage, dirt and copper buildup. Clean the compression area if dirty and replace if worn or damaged.

	<p>⚠ WARNING</p>
	<p>Before changing the pressing jaws, remove battery to avoid unintentional operation.</p> <p>Failure to observe this warning could result in severe injury or property damage.</p>

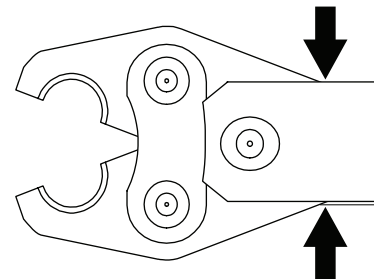
2. Depress lock pin 1 (see views below) and rotate counterclockwise to disengage the pin on the pressing tool.



3. Install the jaw into the pressing tool and align mounting hole in jaw with lock pin. Depress the lock pin to secure the jaw (see views below).



4. Compress the ends of the jaw together to open the jaws and locate the jaws around the fitting to be pressed (see view below).



Operation (cont'd)

- Reinstall the battery and depress the tool trigger to press the fitting. Continue to depress the trigger until the relief valve actuates and the drive rollers automatically retract.

Notes:

If the drive rollers do not automatically retract, the press is incomplete.

The pressing cycle can be interrupted at any moment by releasing the trigger.

- Release the trigger until the drive rollers retract completely.
- Compress the jaw ends together to open the jaws and remove the jaws from the pressed fitting.

Notes:

The pressing jaws must close completely to ensure a leak-free connection. Always check that jaws close completely during a pressing cycle and no foreign objects are between the pressing jaws and mechanism.

The pressing cycle can be interrupted at any moment by releasing the trigger.

If it is necessary to remove the jaws before a press cycle is complete, push the retract button. Pushing the retract button will cause the drive rollers to retract completely.

If the pressing cycle must be stopped before the crimp is complete, and the jaws have to be removed from the fitting, the fitting should be replaced or pressed a second time.


This tool is intended to press NIBCO press fittings onto type K, L, and M hard-drawn copper tubing.

Maintenance

Each Operating Day


Before use:

- Inspect jaws for wear or damage such as cracks, gouges, or chips.
- Inspect the tool for damage or leaks. If damage is detected, call NIBCO technical services or return the tool to an authorized NIBCO service center for inspection.

	⚠ WARNING
	<p>Skin injection hazard: Do not use hands to check for oil leaks. High pressure oil easily punctures skin causing serious injury, gangrene, or death. If injured, seek medical help immediately to remove oil.</p>

After use:

- Wipe all tool surfaces clean with a damp cloth and mild detergent.

	⚠ WARNING
	<p>Do not use solvents or flammable liquids to clean the pressing tool. Solvents or flammable liquids could ignite and cause serious injury or property damage.</p>

- Fully retract the drive rollers. Place the tool in the carrying case. Store in a cool, dry place.
- Charge the battery.

Monthly

- Thoroughly clean all surfaces.
- Oil the pin joints on the jaws.

Annually or After 10,000 Presses

Call NIBCO technical services for referral to an authorized NIBCO service center.

Troubleshooting

Before You Begin

1. Make sure that the battery is charged. Recheck the battery after several minutes to make sure the battery is holding its charge.
2. Use a **nonflammable** contact cleaner or pencil eraser to clean the electrical contacts on the battery and pressing tool.
3. Reinstall the battery and check the tool again.

Problem	Probable Cause	Probable Remedy
Tool is inoperative.	Dirt, contaminants, etc., in ram area of tool. Pressing tool battery contacts damaged. Tool components worn or damaged.	Clean tool. Reform contacts. Call NIBCO technical services for referral to an authorized NIBCO service center.
Jaws stop during operation.	Oil level is low. Air in hydraulic system.	Call NIBCO technical services for referral to an authorized NIBCO service center. Pull trigger and hold retract button simultaneously. Hold for approximately 10 seconds.
Tool loses oil.	Damaged internal seal.	Call NIBCO technical services for referral to an authorized NIBCO service center.

NIBCO[®]
AHEAD OF THE FLOW[®]

*NIBCO Inc. - World Headquarters
1516 Middlebury Street
Elkhart, IN 46516
USA*

*Technical Services
Phone: 1-888-446-4226
Fax: 1-888-336-4226*